



BRYMPTON NEWSLINK - Autumn 2011

Serving and informing the Community

www.brymptonparishcouncil.gov.uk



From the Chairman

Winter Weather - As we approach the coming winter weather can we ask residents to be "self helpers" where possible. BPC will carry a small "stock" of grit bags, if you are aware of a public footpath that needs gritting and are able to collect a bag from the Parish then you are welcome to avail yourself of this stock as long as "it lasts". Please be aware that it is for the public good and not private drive ways. We have decided to operate in this way as last year we had the grit taken from the bin within 12 hrs by a few selfish individuals.

Allotments - This project has now almost been completed. After more than a year of hard work by many people, Brympton now has a thriving and busy Allotment and an active Allotment Association. I would like to take this opportunity to thank in particular Roger Meecham for his special efforts and skills. Thank you Roger, on behalf of everybody.

Urban Extension - Just when you think Brympton can't take any more up pops another project. For whatever reason Yeovil has been designated a development town. The development has to "go" somewhere but the town needs to develop in a sustainable way ie not go on expanding east/west.

I am sure everyone is aware of the vociferous campaign mounted by East Coker PC to have the proposed 3700 homes and employment site located in Brympton instead of 'their own back yard' but over the last 25 yrs north /west Yeovil has absorbed 5000 new homes and 90 hectares of employment whilst the south of Yeovil has provided less than 20 single dwellings in the same period.

It is now time for the Local Planning Authority (SSDC) to do what is right for the wellbeing of the whole town and not just a vociferous few. I am sure the District Council would be pleased to hear your feelings over yet more development in Brympton.

Another point made by East Coker residents is that their village is only 1.2km from the proposed site, well lucky them! Development in Brympton is "eyeball to eyeball" with existing homes, we don't have to go to the top of the Church tower in order to see where the development will be.

We may not have a dead poet to "pull out of the closet" but we do have right on our side, and of course the magnificent Lufton Roman Villa, which is a National Scheduled Site, and Hungerford Field is a treasure trove of Roman living. Is it acceptable that this gets buried under concrete?

More Development - Brimsomere Key Site - After many many years of discussion and counter argument this site seems about to be built-out. Starting with the western end ie Western Avenue. BPC are still of the opinion that the external link road was the better option, but hey what do we know? We have argued that the new bend proposed was too tight and this has been up-held by County Highways, and we now have a "squashed" gyratory system proposed, SCC Highways have said this is ok so we will have to see have it works.

Highway Issues (Of which there are many!!) - A group of local residents have started a petition regarding a pedestrian crossing at the northern entrance to Oak Tree Park. We did ask for this crossing to be provided when the final stages of the Abbey Manor Park development came to planning but our pleas fell on deaf ears.

We are still raising the issue of traffic isolation for the residents of Alvington /Bluebell Rd and we are optimistic that action will be forthcoming for this on the "back" of the Key Site developments of both Lufton and Brimsomere, which will have huge impacts on Brympton in general.

Finally, as we approach winter, can I ask residents to "help each other" where you can. If you have any issues you are concerned about you know where we are, and we are always ready to listen.

*Liz Glaisher,
Chairman*

PARISH COUNCIL NEWS



Councillors - We're sorry to report that two of our Parish councillors, John Hanson and Ernie Appleby, have resigned. Having formally advertised for people to put their names forward for these positions and not received any enquiries we are now in a position to co-opt. If anyone would like to know what's involved in being a parish councillor please contact the Clerk.

Oak Tree Park

A few weeks ago a joint initiative with SSDC saw the youths that use the skate ramps at OTP repainting them with a non-slip paint. An excellent job was done! Next year we hope to arrange for the murals to be repainted and this will again involve the youths.



It's pleasing to note that the amount of litter in this area has generally reduced and perhaps this demonstrates a sense of 'ownership' here.

Sadly the 'On-side' football scheme that we were trying to promote only resulted in two volunteers coming forward and this was seen as not workable so has been deferred for now. We hope to try again next year.

The 'Noise'

No event was held this year but we're going for it again next summer on 1st July.

In addition to the usual skate-boarding and BMX events there will be bouncy castles, craft activities, refreshments and other activities.

The parish council is also arranging for a Roman re-enactment group to attend which should liven proceedings somewhat. This is in recognition of the fact that there is a Roman villa near Lufton and a Roman road at Larkhill so the Romans have definitely been here before!



Diamond Jubilee Events



The parish council did consider arranging some kind of event to celebrate the Queen's Diamond Jubilee next June (2nd/3rd) but felt that people might actually prefer to arrange their own individual street parties.

If you need any advice about holding a street party speak to the Parish Clerk or SSDC.

Higher Ream Play Area -



Various repairs to safety surfacing and painting of equipment were carried out over the summer months and the play area is in reasonable order

again. The parish council is considering the replacement of some of the equipment next year - any ideas or suggestions for equipment would be welcome.

MORE PARISH COUNCIL STUFF

Budget Time Again!



Over the next few weeks the parish council will be considering their Budget for next year. We are conscious of the need for prudence but if you have any thoughts about what projects we could include please let us know.

Larkhill Public Open Space



As mentioned in the last edition of Newslink, the parish council has been looking at the possibility of providing lighting along the new footpaths here.

Unfortunately SSDC, whose land it is, are not in favour of this proposal mainly for environmental reasons. Funding was looking a bit of a challenge anyway so we're afraid that this proposal seems to be a non-starter.

Somerset County Council Boundary Review

In an attempt to make County Council Divisions (the area that a Councillor serves) more equal the Local Government Boundary Commission has been looking at some of the anomalies in Somerset.

One particular SCC Division that is significantly over the 'norm' is the Ilchester Division which (you guessed it) includes the parish of Brympton for which your County Councillor is Sam Crabb. The existing number of electors is over 11,100 whereas the 'norm' is just over 8,100. The proposal being put forward is to move some of the parishes to other Divisions and rename the Division as 'Brympton' which kind of puts us on the map, so to speak.

In addition, the proposals include reducing the number of County Councillors down from 58 to 55 thus saving a bit of money.

If you want to see any details about this please visit the County Council's website.

Fly Tipping (where do all these flies come from?)



There has been a noticeable increase in fly-tipping in the area (not just Brympton) which we assume is related to changes in the operating hours of the recycling facilities and charges that have been introduced.

The District Council is responsible for dealing with it when the rubbish is on public land but if it's on private property it's down to the landowner to sort it out. Where there is evidence (e.g. envelopes with names and addresses on) SSDC will attempt to prosecute the offender.

Hopefully, as people become more aware of the tip operating hours, the problem may reduce otherwise the District Council may have to review the problem.

Highway Matters

Highway Improvements - The parish council has been advised by Councillor Sam Crabb that unfortunately none of the highway improvement projects we put forward for the County Council's Local Transport Improvement Scheme were approved. This didn't come as much of a surprise bearing in mind the economic climate but it is still disappointing. We keep being promised that improvements will come as part of the Key Site developments but we're getting a bit fed up of waiting.

Pedestrian Crossing at Stourton Way - The above situation doesn't bode particularly well with regard to the need for a pedestrian crossing at the northern end of Stourton Way. Residents in this area have been very ...



Highway Matters (continued)

..... pro-active in trying to get this installed and have attended recent parish council meetings. They have been advised by County Councillor Sam Crabb to raise a petition and present it to SCC as a means of demonstrating the public support for this crossing, the estimated cost of which is £120,000 (it apparently needs to be traffic light controlled).

The parish council fully support the need for a pedestrian crossing here particularly bearing in mind potential increased number of pedestrians when the Brimsmore Key Site gets developed. We have written to SSDC and to SCC in an attempt to move this forward. Initial responses seem hopeful.

YTFC Parking Problems - These continue to be a concern for residents particularly those that use Thorne Lane where parking on the southern side extends for quite some distance beyond the Thorne Coffin junction and makes using this road a bit of a gamble.

Meetings between the Parish Council, the Police and YTFC representatives have resulted in the deployment of more 'No Waiting' bollards but these are often ignored.



In highway/legal terms there is technically no offence being committed unless there is obstruction. Our only advice is for residents to contact the Police (on 101) to report any problems.

Lufton Lane Safety - During the process of establishing the allotment site the dangers of exiting from Lufton Lane into Thorne Lane were highlighted. Somerset County Council has promised to paint some 'SLOW' markings on the road to reduce the hazard here.

Adoption of Percivale Road - This long-running saga goes on with County and the developer blaming each other for lack of progress. County Councillor Sam Crabb is trying to resolve the issue.

Planning



Apart from the run of the mill planning applications for conservatories, etc that the parish council has been consulted on there are two ongoing major issues.

One of these is the District Council's '**Core Strategy**' for future development in and around Yeovil but more of this later.

The other issue is to do with the **Brimsmore Key Site**. Outline approval for this major, 'Key Site' development for 840 dwellings plus community facilities to the north of Thorne Lane was granted a while ago so it will happen at some time. However one of the parish council's more recent concerns was that the current detailed application (SSDC ref 11/00361/REM) for the first phase of 298 dwellings shows the proposed east-west link road going through the middle of the development rather than looping around to the north as originally envisaged. The other issue is to do with the arrangement at the Western Avenue/Thorne Lane junction.

This proposal has been the subject of much discussion at parish meetings and there has also been much debate between the developer's highways expert and the County Council's about the technical issues of the proposed highway system.

In the end, and in the face of all the 'expert' advice, the parish council has reluctantly accepted the inevitable here but we reserve the right to say 'we told you so' in the future.



News, Events & Information from South Somerset District Council

The following items are extracts from SSDC's Newsletter. If you would like any help, advice or further information please contact the Area South Development Team at South Somerset District Council, Petters House, Petters Way, Yeovil, BA20 1AS, telephone 01935 462734, fax 01935 462907, e-mail: areasouth@southsomerset.gov.uk,

Yeovil Town Centre Audit



A group has been formed to look at the overall condition of Yeovil Town Centre. The group will be looking at street furniture, including benches, litter bins, cycle racks, bollards, footpaths, signage, floral displays and street lighting columns.

The work also includes the general presentation and cleanliness of the town. A list will be drafted outlining what work needs to be carried out and this will be done over the coming year.

The maintenance of Yeovil town centre is currently covered by the SSDC Streetscene Team and includes cleaning the streets, emptying litter bins and maintaining the floral displays. The County Highways Department repair the highways areas including the footpaths and maintain street lights and bollards.

Although these activities are generally carried out to a good or reasonable standard, there is no systematic and co-ordinated approach to identifying and ensuring that issues in the town centre are addressed. In the current economic climate, it is essential to ensure that visitors, shoppers and prospective new businesses have a good overall impression of the town centre.

This group will not replace the usual channels for reporting defects or making general complaints about Highways or street cleaning issues. If you would like to know more about the project, please contact Marie Ainsworth on 01935 462787 or e-mail marie.ainsworth@southsomerset.gov.uk

Free equipment for families to use



Family Connections has been running activities for families over the last few months. These have included taster activities in digital photography, film making, animation and internet safety. A trip to Bristol was organised, a Family Fun Day and a project was run by a family; filming and documenting the Milford Community Association.

Now equipment is available to be booked out which is completely free! Bookings can be made by calling James Divall on 462703 or email james.Divall@southsomerset.gov.uk.

All you need to do is call or email to book the equipment, take along a form of ID and state when you will be returning it.

There is an I-mac computer, a Macbook, two camcorders, one of which is waterproof, and two tripods.

The website www.familyconnections.org.uk has more details and a series of entertaining videos which explain how to get the best from the cameras. Don't forget, the equipment is completely free to use and you don't have to be enrolled on the Family Connections course to book it out.

Here are just a few ideas of what the equipment could be used for; internet access, composing a family tree, preparing a slide show, filming a family holiday, taking pictures of a football game, making a fun animation; the possibilities are endless!

This project is run by Somerset Film and funded by Big Lottery.

Events

Christmas Lights Switch On

The Christmas lights switch on is scheduled for Thursday 24th November in Ivel Square, Quedam Shopping Centre, Yeovil. The lights should go on at approximately 6.30pm.



'Zero' events

The next Zero event is planned for Wednesday 28th December. Zero events are held at Club Neo, Stars Lane from 7pm to 11pm.

These events are part of regular club nights organised by Zero a partnership of South Somerset District Council, Avon and Somerset Police, the County Youth and Community Service and NHS. Zero aims to promote zero tolerance to alcohol and antisocial behaviour by carrying out random breath testing, bag searches and searching on entry.

Markets

Visit Yeovil's Tuesday and Friday outdoor markets to enjoy the banter between 9am and 3pm.



There will be Sunday Christmas markets starting on 20th November, 27th November, 4th December, 11th December and 18th December culminating in Christmas week, when there will be a market every day from 20th December to 24th December with all the above and more.

Somerset Farmers Markets are held on the fourth Saturday of each month in Middle Street, Yeovil from 9am - 1 pm.

Dates for the remainder of 2011 are 26th Nov and 24th Dec.

Shopmobility



Yeovil Shopmobility is a scheme providing powered scooters, as well as powered and manual wheelchairs to enable people with limited mobility to shop and use other pleasure/leisure facilities in Yeovil.

Their aim is to enable people with mobility impairments to take increasing control of their own affairs and to pursue personal choice, to advance and improve their quality of life. Anyone with limited mobility can use Shopmobility, whether through permanent or temporary disability, illness, accident or age. You do not have to be disabled to use the service.

Yeovil Shopmobility is based at Lower Ground Floor, Quedam Shopping Centre YEOVIL BA20 1E4. You can find them in the lower lift lobby of the Quedam Shopping Centre Car Park (At ground level the lifts are adjacent to Iceland & BHS).

Words of Wisdom

- ◆ Quality means doing it right when no one is looking.
- ◆ Facts do not cease to exist because they are ignored
- ◆ Time is God's way of keeping everything from happening at once .
- ◆ If you die in an elevator, be sure to push the Up button.
- ◆ After one look at this planet any visitor from outer space would say: "I want to see the manager!"
- ◆ The road to success is always under construction.

Crime & Disorder



In her latest report Chief Superintendent Nikki Watson, District Commander of Somerset East District, advises that, with input from their specialist teams, better analytical capability and their response/neighbourhood teams, working together with communities, the Police recorded a reduction in overall crime of 6.5% in the first 100 days of the current crime year. This is apparently the best reduction achievement by any BCU in Avon and Somerset so far this year and means that there have already been 323 fewer victims of crime when compared to the same period last year.

In particular, violent crime is down almost 10% on the previous year and also worth noting is this year's reduction in recorded criminal damage of 15%.

As a result of engagement work within communities the number of reported cases of Anti Social Behaviour has also reduced by 22% since 1st April.

Nikki advises, however, that theft from motor vehicles (TFMV) has increased when compared to last year. Most of this crime is opportunist and is occasioned because valuables have been left on view or the vehicle left insecure so motorists are reminded that removing money and valuables from sight and locking your vehicles are an effective deterrent against this sort of crime.

Nikki also advises that the Police receive valuable support and assistance from a thriving Special Constabulary membership on the District. In the last few months they have assisted with numerous investigations and if there is anyone who is interested in becoming a Special Constable or a Police Volunteer there are apparently a number of exciting opportunities in this area and Nikki would be happy for those interested to contact her.

Please note that, from September 2011, Avon and Somerset Constabulary changed from the 0845 456 7000 general enquiries telephone number to the National 101 non emergency telephone number.

In an emergency the public should still call 999 such as when a crime is in progress, when there is danger to life or when violence is being used or threatened however, the new number should be used in all other situations.

For further information Nikki Watson's contact details are:
Yeovil Police Station, Horsey Lane, Yeovil , Somerset BA20 1SN
Telephone: 0845 456 7000
E-mail: Nikki.Watson@avonandsomerset.police.uk
or visit the Police website at www.avonandsomerset.police.uk

Bobby Van



Avon and Somerset Police run a Bobby Van scheme, which helps to reduce the fear of crime for vulnerable people and victims of burglary, domestic violence and hate crime.

Trained carpenters visit the homes of people to offer advice on security issues and where necessary, fit locks, bolts, chains, door viewers etc.

This service is free of charge to victims of crime and the vulnerable. Further details available by calling 101 or your local Police contact.



Some Words of Warning from the Fire Service

"Think twice before sending out a sky lantern"

The use of Sky (Chinese) Lanterns is growing in popularity and these are often seen in the night sky at festivals, weddings and other celebrations. Devon & Somerset Fire and Rescue Service (DSFRS) would like to remind you that the potential fire risk of setting off a lantern is very high and can harm livestock, wildlife as well as the environment.

Deputy Chief Fire Officer, Martin Clark, Chairman of the Chief Fire Officers Association National Prevention Committee, says: "We have seen the devastating effects that fires can have on the economy and the beauty of our local areas. Although Chinese lanterns can look spectacular, once airborne they cannot be controlled."

The lanterns when lit will rise for up to 20 minutes and can ascend to over a mile in the sky - where they will still be visible on a clear night until they disintegrate. There are reports that lanterns can struggle to fly in overcast conditions and return quickly to the ground.

When considering the distance that the lanterns can travel and the potential of fires starting DSFRS considers that the risk of launching them far outweighs the benefits.

Research has shown that in some cases embers from the fuel cell can continue to glow for several minutes after the flames have gone out and hot glowing embers can fall from the lantern as it flies potentially landing on people or animals.

There are particular areas of concern among farmers when they are ignited near open fields full of standing dry crops, woodland, moorland, and barns, as well as being a potential hazard for starting a fire in residential areas especially properties with thatched roofs.

The National Farmers Union has received numerous reports of harm to livestock, and in some instances death, caused by cattle ingesting the metal wires contained within the lantern frames.

The danger and the repercussions of digestion are not realised until after the animal falls ill, usually ending in a slow and painful death unless destroyed by a vet. The small pieces of metal wire the lanterns are made of are not detectable by the metal detectors on the silage making machinery.

The lanterns are often seen as a gentler alternative to fireworks, but the potential risks they carry are high and although they are not banned - there is already a complete ban on the lanterns in Germany and Australia.

DSFRS would not recommend their use and if the lantern does start a fire there is the possibility that you could be held responsible.



West Abbey Choir at West Abbey Care Centre, Stourton Way



We are looking for volunteers - singers and musicians who can give an hour of their time on a Thursday afternoon would be inspiring and make us very happy.

We are very grateful for angels, please call West Abbey Care Centre on 01935 411136 or email westabbey@barchester.com, attention to Mrs Redman, Music Therapist

Motoring with Pete - 'A Winter's Tale'.



2009 and 2010, were cold and we had plenty of snow, in fact on Friday 17th. December 2010 during most of the morning you could not get out or in to Yeovil due to the roads being blocked with snow and on Monday 20th December 2010 the M5 in Somerset was closed because of the amount of snow on the carriageway. The snow and cold started in November 2010 and lasted through to March 2011 and according to the weather experts this kind of weather will become the norm rather than the exception.

Somerset County Council have already increased their stock of gritting material over what they used last winter, but their priorities will be to "A" class roads and the main bus routes, these will be followed by all other classified roads, minor bus routes and important unclassified roads and, if materials and time allow, the main estate roads. The Highways Agency is responsible for all Motorways and because the majority of people have their access onto minor estate roads the gritting is not initially going to help us.

So what can be done to help?

The first option is to stay at home or wherever you are and wait until the weather improves, but this may not be feasible. You can buy traction treads which you place under the drive wheels of the car but will you have to stop again in order to pick them up and start over again, not a very good idea!! Or you can fit winter tyres to your car.

So what are winter tyres, they are tyres specifically designed to be used at a temperature of 7C or below. The tyres are made of high silica compounds which give a more flexible construction and, allied to tread sipes that create a multitude of grippy edges, cope infinitely better with low temperature conditions of either snow, ice, or wet roads allowing better grip and water to escape from under the tyre more easily. Tyres are rated for maximum speed and weight that they are carrying, even an H rated tyre has a maximum speed of 131 mph!

Tests have shown that in conditions below 7C a car fitted with winter tyres will stop in a distance of 35m where as a car fitted with ordinary tyres will take 43m to stop. Winter tyres will also give you better traction control and more control when turning corners and do not effect the ABS braking.

Winter tyres are not only designed for cars with either front or rear wheel drive but will also give better performance for vehicles with all wheel drive or four wheel drive. Winter tyres cost no more than summer tyres, therefore in reality the only expense is the purchase of the extra set of the wheels. The tyres when not in use have to be stored flat.

In the Quebec Province of Canada by law you have to change from summer tyres to winter tyres by the beginning of December and you are not allowed to return to summer tyres until the end of April, this law also is in force in several European Countries now.

So, in conclusion, if you have to use your car most days and you drive long distances it would be of great benefit to you and for your own safety to change over to winter tyres at the beginning of December and to keep them on until the end of March or when the temperature is consistently above 7C.

Safe motoring,

Pete



Museum of Somerset opens to public



Amid the smoke and noise of musket fire, Mick Aston from Channel 4's Time Team helped open the Museum of Somerset to the public on Thursday 29 September.

With the bells of St Mary's Church ringing out across Taunton, the opening ceremony saw members of Taunton Garrison march to the gates of Taunton Castle in an English Civil War style re-enactment. Firing their muskets and in full 17th Century dress they demanded entry in the name of Parliament. They were followed through the Castle gates by the children from Bishops Hull Primary School who became the first official visitors to the Museum, and a further 300 visitors who came through the entrance in just the first hour.

Mick Aston said, "The museum is a fantastic tribute to Somerset. It is full of treasures. I don't mean the silver and gold kind. I mean the type of treasures that illustrate real people's lives and the fascinating stories that lie behind them."

The first 100 visitors each received a souvenir biscuit in the shape of a boot, which commemorated the famous words of Colonel Robert Blake, who while defending the castle for Parliament during 1645, declared that he would eat three of his four pairs of boots before he surrendered.

County Councillor Christine Lawrence, Cabinet Member for Community, said:

"The £6.93 million invested in the redevelopment of Taunton Castle, which has included £1.8 million from Somerset County Council, has provided Somerset with a fantastic new visitor attraction that is free to enter.

It tells the story of Somerset from prehistoric times to the present day and combines a wealth of our heritage with evocative films and the stories and words of Somerset people."

Sam Hunt from the Heritage Lottery Fund that provided a grant of £4.8 million to the redevelopment said: "This museum is one of the finest museums I've seen in the UK. As a Director of the Association of Independent Museums, I can tell you that the new museum of Somerset is up there with the National Museum of Scotland and Cardiff Story in terms of museums that tell the local story and have a genuine aspiration to engage local people."

The museum is open from 10am to 5pm, Tuesday to Saturday and on Bank Holiday Mondays

Guide/Brownie/Rainbow Leaders needed



Do you have a few hours a week you could spare in the evenings?

Yeovil Girl Guiding is looking for new volunteers to help at existing Rainbow, Brownie and Guide units within Brympton Parish.

If you would like to support your community in a fulfilling guiding role and require additional information please contact

Karen on 01935 425804 or email her at Karen@stockford1976.orangehome.co.uk.

News from St. James Church

Thank you to everyone who supported Harvest collections for the Lord's Larder at the church, school and pre-school. The Lord's Larder is a local food bank which helped around 2000 local people last year, and with the recession is needed now more than ever.

Youth and Childrens Groups:

- Tots and Toys** - Tues 10-11.30, for 0-2's and parents/carers at St. James Church Room.
- Parents and Toddlers** - Weds 10-11.30am at Abbey Community Centre.
- Junior Church & crèche** - weekly at Sunday services.
- Youth Group** - Sunday Evenings,
For more details of these, please contact Karen 425877.

Social Groups:

- Coffee Mornings** - 1st Thursday of every month,
- Ladies Group** - 2-3.30pm every Wednesday for tea & chat,

The church is open for visitors and prayer on Tuesday and Thursday mornings, 10am - 12 noon

Christmas Services (not long now!)

- Sat 17th Dec - Christingle, 4pm St. James Church
- Sun 18th Dec - Carols by Candlelight, 6.30pm St. James Church
- Fri 23rd Dec - Christingle, 4pm at Palmers Garden Centre
- Christmas Eve - 3pm & 5pm Nativity/Crib Service at St. James
- Christmas Day - Family Communion, 10.30am @ St. James

Other Events:

Messy Church - Fun, games, songs, drama, lunch!
10.30-12.30 Sat 12th November & 10th December at St. Peters, Coronation Avenue.

Remembrance Service - Sunday Nov 13th, 10.15am at St. James

Sunday Services (all 10.30am)

- 1st Sunday of the month - Morning Prayer at St. James, Family Service at Abbey Community Centre
- 2nd Sunday - Choral Communion @ St. James, Café Service at Community Centre
- 3rd Sunday - Family Service @ St. James
- 4th Sunday - Family Communion @ St. James
- and evening services every week at 6.30pm, if you prefer something more reflective.

Baptisms and Weddings:

Most Newslink readers live within the parish, and we regularly hold baptism and wedding services to help families celebrate these key times in life. If you want to find out more, come along on Sunday morning at 10.30am or ring one of the contact numbers below.

Contacts: Church Office 414097, Rev. Tony Perris 429398, Rev. David Keen 422286, email: clergy@stjames.org.uk



The Church of St. Peter & St. Paul, Lufton

(A Part of the Church United Benefice of Odcombe with Lufton, Montacute & Brympton)

Our beautiful, small, rural Church nestles at the heart of the ancient hamlet of Lufton and we welcome all those who wish to worship with us. For those of you who have had difficulty in finding us, we are situated adjacent to the Manor Farm section of Lufton College. Follow the Montacute road out of Yeovil and take a right turn where you see a sign to the College, pass through the hamlet, turning left at the first T junction and you will view the Church by the Green.

On Sunday 18th September we held our **Harvest Thanksgiving Service** at 4.30pm. All produce generously brought to decorate the Church is donated to Barnabus House and gratefully received. A special invitation was sent to the new allotment holders now visiting Lufton. Only two joined us, but we hope that more will wish to 'give thanks' next year for a productive crop!

Regrettably we did not have any visitors from beyond our usual congregation for our **Songs of Praise Service on 16th October**, but we all enjoyed singing some of our favourite hymns with great gusto! What we missed out on numbers, we made up for with volume!

Our regular Services are more traditional, as we still enjoy **BCP (1662) Services of Holy Communion on the 1st Sunday of each month & Evensong on the 2nd & 4th Sundays** of each month, at **6.00pm** throughout the year. We still enjoy traditional hymn singing.

On the **3rd Sunday of each month** we are holding a **Celtic Service (in the Iona Tradition)**, unless stated otherwise. Each service has a differing theme, the time remains at **4.30pm** throughout the year and is led by our regular Lay Reader, Bill Chapman.

Forthcoming Events & Services are as follows:-

On Sunday 20th November at 4.30pm we hold our Celtic Service in the Iona Tradition - a Service of Light, led by Bill Chapman.

Our Candlelit Christmas Service of Carols & Readings will be held on Sunday 18th December at 4.30pm. A very special service followed by our traditional seasonal refreshments.

Please refer to parish Notice Boards for service updates during 2012.

Throughout December there many different services held in our benefice, during Advent and over the Christmas period. Do contact our Rector for details.

There will be a PCC Meeting on Sunday 27th November, following the 6.00pm Evensong Service

Please note that during 'winter time', most services will be held at 6.00pm.

ALL ARE MOST WELCOME AT OUR SERVICES.

For more information about the Church & Services please contact Rev'd. John Jenkins (01935 863034) or Churchwardens Mr Marvin Collins (01935 426153) or Dr. Francis Burroughes (01823 652500 during office hours).

Yeovil Recycling Centre - Normal Opening Times

Monday	Tue-Wed	Thu-Fri	Saturday	Sunday
8am-7pm	Closed	8am-4pm	8am-4pm	8am-1pm
Charges apply for disposal of certain materials see SWP website for details				



Core Strategy

What is it? - The 'Core Strategy' is to do with the very important issue of future development in the South Somerset area and will be the main component of the 'Local Development Framework' which, in turn, will form the basis of the general strategy for development between 2012 and 2026. This used to be known as the Local Plan and periodically SSDC as the Local Planning Authority are required to update this framework.

It's not just about how many houses will be built and where, although that is a fairly major element, it includes other major issues such as employment land allocations and infrastructure issues (e.g. highways and education facilities).

The **Core Strategy** process started some while ago and needs to be in place by 2012 when the current Local Plan runs out. It is a very lengthy process involving some complex assessments and evaluation of the various options for consideration but, more importantly, it includes the opportunity for public consultation at various stages. The initial consultation on the Draft Strategy took place last Autumn since which time SSDC have been sifting through the numerous comments and commissioning various technical reports.

The next stage in the process will be reports to various Area Committees and then to Full Council before publication of a revised Strategy which will be issued for further public consultation about 9 months from now.

Details can be seen at www.southsomerset.gov.uk/corestrategy

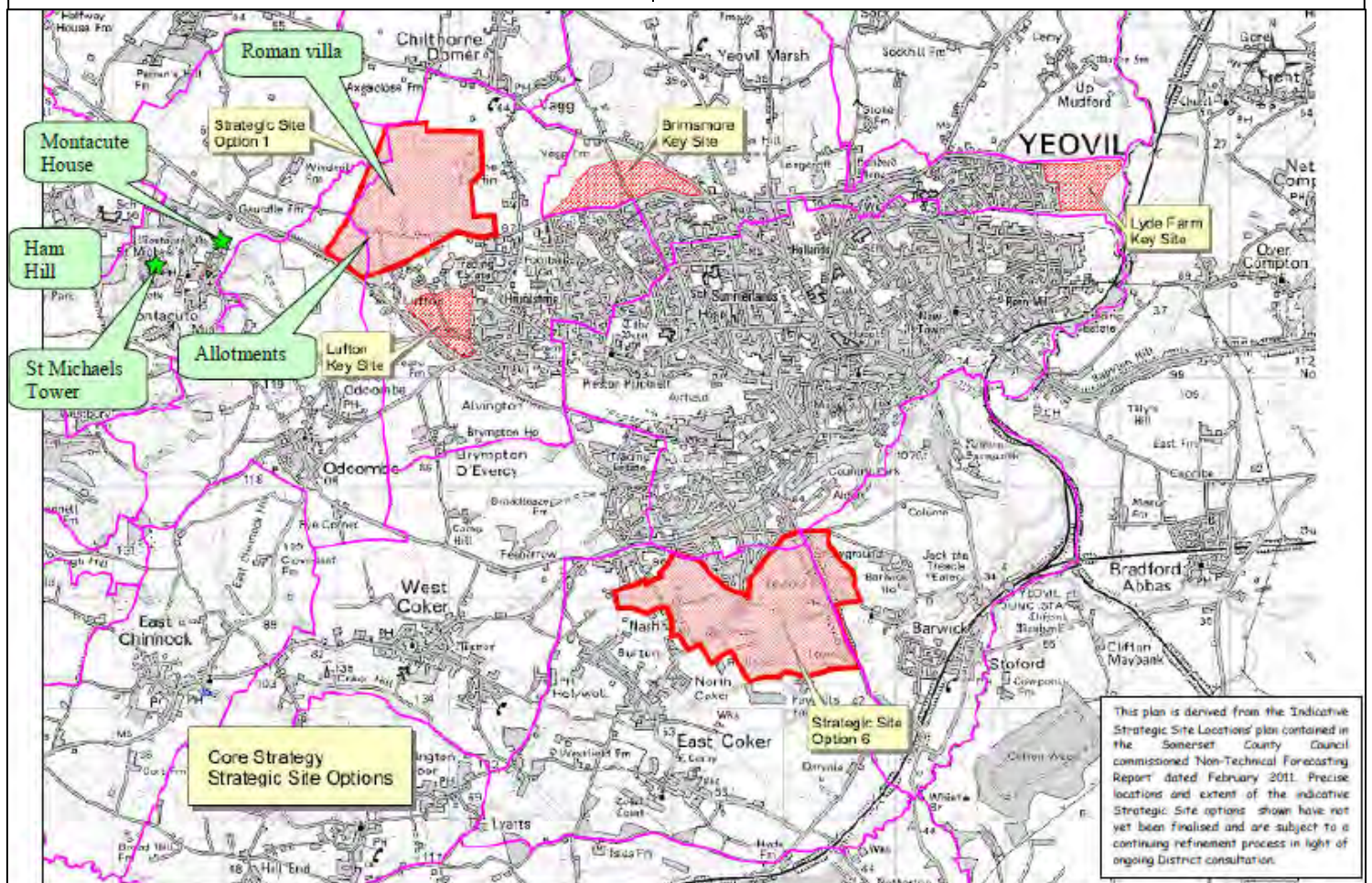
The focus at the moment, and what particularly concerns Brympton Parish Council, is the location of a proposed 'Eco' Urban extension to Yeovil which will provide some **3,700** homes together with community facilities and some **23** hectares of employment land.

Considerable analysis of the options has already taken place looking at issues like landscape, highways infrastructure and sustainability. Of the original six sites around the periphery of Yeovil there is now a 'shortlist' of two, **Option 1** in the north-west and **Option 6** in the south - refer to map below for the indicative locations (*please note that this map is derived from SCC's Transport Assessment and may be subject to some changes as the Core Strategy is developed*).

Of these two sites, the various technical reports have concluded that **Option 6** would be best and this includes the 'Keyford' location recommended by the Planning Inspector when he reported on the current Local Plan in 2003.

Also shown on the map are the already allocated 'Key Sites' that will be developed over the next few years. When the sites at Lufton and Brimsmore have been completed that will bring the total number of new homes built in the north-west of Yeovil over the last **25** years to **5,000** - little wonder that the highways infrastructure is struggling to cope. In the same period there have been approximately **15** (yes 15) homes built in the East Coker area.

Residents of East Coker, perhaps not unsurprisingly, suggest that **Option 1** would be best. Well, at Brympton PC we don't agree and think it is totally unreasonable. We need your support, in whatever form, to prevent further development in the north.



BRYMPTON ALLOTMENTS



Brympton Parish Council recently handed over the new allotments at Thorne Lane to the newly formed Brympton Allotment Association. This event (see photo below) was the culmination of about a year's work involving obtaining a legal agreement with the landowners (Mr & Mrs Baker) who kindly made the land available for use as an allotment; obtaining planning permission for a new access and car park; and constructing these. Since the handover there has been frantic activity by all the allotment holders on evenings and weekends to get their plots prepared and planted up for the winter.

Liz Glaisher, Chairman of the Parish Council, said:

"The establishment of these allotments has been a lengthy process because of all the criteria we as a council have had to meet. However it has been a brilliant project and an excellent example of all the tiers of local government and a local landowner working together to bring this to fruition. It seems to be an expensive outlay but worthy of the finance, as it is an asset that will be well used by the community.

"I'm very proud of the project and everyone who has worked exceptionally hard to bring this about. The Parish Council wishes all the allotment holders many happy hours of digging!"

Paul Taylor, Chairman of the Brympton Allotments Association, said

"Following requests from a number of parishioners for allotments the Parish Council approached the community in 2010 to ascertain the amount of interest in allotments. The response was overwhelming and the Brympton Allotments Association was formed.

"A committee was elected from volunteers and were tasked with setting up the infrastructure required for the running of an allotment site. Since last December the committee have met on a regular basis to sort out bank accounts, rules and the constitution, and have liaised closely with the Parish Council in order to keep the project going.

"This is a great opportunity for the community to come together on a project that will bring people with a common interest together to exchange ideas and form new friendships.

"The Allotment Association is very grateful to the Parish Council and the landowner to be given the opportunity to have allotments within the parish. All of the plots bar two are full and anyone from within the parish can apply to have one. We are looking forward to many years of productive growth".

The photograph below shows Maggie Baker (landowner), Paul Taylor (Chairman of the Allotments Association), Elizabeth Glaisher (Chairman of the Parish Council) and Colin Baker (landowner), together with other Parish Councillors and allotment holders, all celebrating the handover event.



PARISH COUNCILLORS NEEDED - If you are willing to devote a small amount of your time for the benefit of YOUR community please contact the Parish Clerk - details below.

Your Parish Council

Elizabeth Glaisher (Chairman)	11 Athelney Way, Yeovil, BA21 3TN
Roger Meecham (Vice Chairman)	13 Tintagel Road, Yeovil, BA21 3RE
Peter Dutton	46 Thorne Gardens, Yeovil, BA21 3RG
Edwin (Eddie) Galjaard	The Gatehouse, 1 Percivale Road, Yeovil
Graham Pritchard	10 West Combe, Yeovil, BA21 3UE
Peter Sealey	264 Mudford Road, Yeovil.
Peter Seib	11 Forde Park, Yeovil, BA21 3QP
Darren Shutler	5 Streamside Cottages, Yeovil,
John Strong	The Estate House, East Coker
Vacancy	
Vacancy	
Parish Clerk: Elizabeth James	The Parish Office, Abbey Community Centre The Forum, YEOVIL. BA21 3TL

Parishioners can contact the Parish Council by:
 Telephone: 01935 424332
 e-mail: clerk@brymptonparishcouncil.gov.uk
 post to: Brympton Parish Council, The Parish Room, The Forum, Yeovil BA21 3TL

Parish Council Meetings

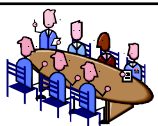
Members of the public are always welcome at Brympton Parish Council Meetings and there is an open forum at the start to raise any concerns.

Agendas are published on the Parish Notice Boards 5 clear days before the meetings and also on our web site www.brymptonparishcouncil.gov.uk

The next few meetings are:

23rd November at Abbey Community Centre
 21st December at Jubilee Hall, Thorne Coffin
 25th January at Abbey Community Centre
 22nd February at Abbey Community Centre

All meetings start at 7.30 p.m.
 The meetings held at the Community Centre are held at the Parish Room and entrance is from the external ramp only - there is no entrance from the main hall



Brympton Newslink is published by Brympton Parish Council and is normally delivered to about 3,000 houses in the parish.

Our thanks to St James Scouts who are helping to deliver this edition of Newslink.

The views in this publication do not necessarily represent the views of Brympton Parish Council or the Editor (Roger Meecham)