



# BRYMPTON NEWSLINK - Autumn 2010

Serving and informing the Community

www.brymptonparishcouncil.gov.uk



## From the Chairman

**Cuts** - the major topic of the time! It seems that Parish councils are going to be "used" by other authorities to pick up the cost of their cutting process. That will mean that at PC level we would have to raise our precept to cover their cuts, so in effect the taxpayer would be "paying twice" for the same or even reduce service. However this is speculation at this stage and we wait to see what actually is going to be withdrawn, hopefully it will be "back office" cuts and not frontline services!

**Planning** - Both the Key Sites i.e. Lufton and Brimsmore are now very active. As usual we are working hard to ensure the best outcome for current and future residents. However major highway improvements are still only a dream, so expect more traffic congestion on the west side of Yeovil! We've been "banging this drum" for years and nothing changes.

**Core Strategy**...local government "speak" for building huge amounts of extra housing in Yeovil is also ongoing and again the arterial highways are not being "flagged up" as a major concern.....

**Sports Zone** - another SSDC project that keeps being resurrected. Is this a facility for Yeovil or for the whole district? Unfortunately for SSDC, other than Mudford Rec, they own no land on which to develop this project, so they are reliant on a developer "gifting" the land to them. This will mean either the Bunford Employment site (designated as High Tech employment land) or the Key Sites. It will be interesting to see which "magicians hat" produces the millions required for this at this cash-strapped time!

**Allotments** - BPC are running a project to provide allotments for Brympton residents and a public meeting has been organised for 14<sup>th</sup> December to ascertain the "need" for this facility. If you're interested please take the time to attend this meeting.

**LOSP** - We are pleased to say that at last the next stage of the Planning for Real, the laying of an all weather path from the end of King Arthur Drive, will becoming a reality (weather permitting). As in all local government projects these thing often take what seems a long time but it must be done "legally" and "competently". I'm sure this next project will be as welcome and as well used by residents as the new bridge and path we built 18 months ago.

**Our PCSOs** have been doing sterling work for Brympton especially with the Oak Tree Park problems and in particular the perennial littering. There is a limit to the number of bins worth providing when the current ones are ignored by users. It really is so disappointing that this abuse of our environment continues after all the money and time devoted to the area.

May I take this opportunity to wish everyone a Very Happy and Peaceful Christmas and a quietly careful New Year!!! On your behalf, I wish to thank all our councillors and our clerk and ranger for all their help, contributions and efforts over the last year.

*Liz Glaisher, Chairman, Brympton Parish Council*

## PARISH COUNCIL NEWS



We're still looking for parish councillors to fill a couple of vacancies. No qualifications are necessary, just an interest in the local community. If you want to know what being a parish councillor entails 'Google' 'being a parish councillor' or see more info on the back page.

It's not a major commitment, and there are no party politics involved (not at Brympton PC anyway). If you're interested please contact Liz James, the Parish Clerk



We are currently considering our Budget for next year and we are endeavouring to keep the bottom line more or less as it is this year (a total of £47,000 which equates to £18.78/ year for a Band D property). As Liz says, there are pressures to take on extra services that the District and County Councils may be unable to provide due to Government cutbacks and all Parish Councils have recently received letters from the lead authorities asking them to consider doing just that. The inclination is to decline this invitation but we may need to be a little pragmatic about the situation for the benefit of the community.

We would be interested to hear your thoughts on this.

You will no doubt have seen in the media the proposals by Somerset County Council to cut back (or even withdraw) funding for various services that they currently provide or contribute towards. Their financial situation is quite serious but the extent and rapidity of some of the cutbacks announced would seem rather hasty and could well be felt for many years to come.



On a 'lighter' note, the Parish Council has been endeavouring to get the lights at The Forum sorted once and for all. There has been much debate about who is actually responsible for these lights but we are hopeful that this question will be resolved shortly.

Sticking with The Forum, the Parish Council is trying to arrange, with the Abbey Manor Group, to install a couple of grit bins to improve safety for the forthcoming winter.



We are still trying to get a Post Office established at The Forum but the initial response from Royal Mail was not very hopeful. Their recommendation was that we get our MP to lobby for it. We actually wanted a bit more than a lobby!

**Planning** - I would ask that you look at the 'Core Strategy' pages in this edition of Newslink and have a look at the District Council's proposals for future development in the area.



The Key Site developments at Brimsmore and Lufton are slowly progressing through the planning process. I'm aware that there is additional public consultation taking place in connection with the Brimsmore site and if you are interested I would direct you to SSDC's offices at Brympton Way to have a look at the details.



**Lots of Things Happening at Preston C of E Primary School**

Children from Preston Primary School have made an amazing effort to fill shoe boxes for 'Operation Christmas Child 2010'. The contents included a variety of toys, warm hats, scarves, gloves, books and toiletries. 'Operation Christmas Child' celebrates 20 years of bringing joy into the lives of underprivileged children, putting a smile on every face. It is a powerful way to share God's love at Christmas. The children have really enjoyed being part of this project and remembering children who are less fortunate than themselves.



With the help of the Royal British Legion Postcard Project, Year 6 children at Preston Primary School had the opportunity to write and send their own personal messages of support and remembrance to injured service personnel, bereaved Armed forces families and veterans of all ages. The children also designed their own poppy artwork to help them understand the meaning of the "poppy" as a symbol for Remembrance.



**Preston Primary's Litterpick at Oak Tree Park**

Class 6B from Preston Primary School recently helped keep Oak Tree Park tidy when they did a Litterpick. This formed part of their Geography studies which has been looking at the local area. Local Enforcement Officer, Lynette Osmont, gave a talk to the children emphasising how important it is to keep the area clean and litter free. "We want the children to take pride in their community, and they loved being able to contribute in a practical way," said class teacher, Claire Hodgson.

*Well done kids (Ed)*



Larkhill Open Space  
Darren's Autumn / Winter Update

**What will you see in October?**

Acorns from Oak Trees  
These are eaten by squirrels,  
mice & large birds.



**In November** look out for  
spiders and their webs. Their  
almost invisible silk like webs  
are spun over the grass.



**In December** you may be  
lucky enough to see a fox.  
You may here them at night  
with their high pitched bark.



**In December** you will also notice  
more Robins who are setting up  
their breeding territories. They do  
this by singing in the trees  
branches



**In January** look out for starlings.  
They are nesting in the trees and  
feed off almost anything from  
insects to seeds and rubbish.  
They are more speckled in winter

You may have seen these  
birds gathering together  
and forming a swarming  
mass



All through the autumn and winter look out for  
EVERGREEN trees and shrubs namely Holly, Ivy and  
Conifers such as Yew



See how many different  
autumn leaves you can find. You  
should be able to identify, Oak,  
Ash, Willow, Maple and Hazel  
leaves and nuts



OAK



ASH



WILLOW



FIELD MAPLE



HAZEL

Darren is on site on Mondays and Fridays from 8.00  
until 3.30. He is happy to answer any questions you  
may have about Larkhill.

**Footnote!**



In case anyone was  
wondering, the surfacing  
of the footpath from  
King Arthur Drive to the Abbey  
Manor bridge hasn't been  
forgotten. The contractor who  
will be carrying out this work for  
the District Council has  
unfortunately been delayed on  
another project. He has promised  
to be on site in mid December.  
The Parish Council's role here is in  
promoting and paying for the work  
to be done.



**Core Strategy**

**What is it?** - The 'Core Strategy' is to do with the very important issue of future development in the South Somerset area and will be the main component of the 'Local Development Framework' which, in turn, will form the basis of the general strategy for development between 2012 and 2026. This used to be known as the Local Plan and periodically SSDC as the Local Planning Authority are required to update this framework.

It's a very important process. It's not just about how many houses will be built and where, although that is a fairly major element, it includes other major issues such as employment land allocations and infrastructure issues (e.g. highways and education facilities).

The **Core Strategy** process started some while ago and needs to be in place by 2012 when the current Local Plan runs out. It is a very lengthy process involving some complex assessments and evaluation of the various options for consideration but, more importantly, it includes the opportunity for public consultation at various stages.

You should all have received a leaflet from SSDC explaining the principles, setting out the timetable and asking for comments. The diagram on the opposite page was included in the leaflet and indicates some of the basic proposals.

*These are some of the points that SSDC wish to emphasise:-*

- 1) This is everyone's chance to influence the proposals and policies that will be used until 2026. The Council needs to make decisions about the amount, type and location of houses, employment, and so much more, so this really does affect YOU
- 2) This plan affects the health centres, green spaces, play and sports provision, roads, services, in fact this plan will shape the WHOLE of South Somerset.

3) 10,000 of the 16,600 proposed new homes have ALREADY been built, allocated or given planning permission, which puts the figure into perspective. Originally the Government's Regional Spatial Strategy (RSS) required the Council to plan for 19,700 homes but as soon as this RSS was dropped, SSDC chose to revert back to their original figure of 16,600 - a figure believed to better match the district's needs and capacity.

4) The very reason why SSDC is holding a consultation is because the plan is only in draft format at the moment and they want people's comments before coming up with a more final version. Even that version will go for further public consultation so do not feel that the contents of the draft are 'final' - this is a chance to shape it. It's a long but a thorough process meaning the Council can take on board new information and add things where you feel they have missed important points.

**Why do we need development? Councillor Ric Pallister has offered the following explanation**

*"Our population is growing. We are all living for longer and people move here from elsewhere, often to retire. At the same time we need employment growth so that there are jobs for local people and those leaving education. A vibrant economy means low unemployment and enough homes, health services, leisure facilities and good shops set in an area where people want to live. We need to plan carefully to meet the future needs of those who live in our towns and villages, especially to get homes and jobs, in the right places and with the right balance"*

Residents can look at the documents and make their responses, online at [www.southsomerset.gov.uk/corestrategy](http://www.southsomerset.gov.uk/corestrategy)

**The Timetable:**

↓	March 2008: Core Strategy Issues and Options document consultation
↓	8 October to 3 December 2010: Public consultation on draft Core Strategy (Incorporating 'preferred options')
↓	December 2010 to July 2011: Evaluate all responses and finalise Core Strategy for approval by South Somerset District Council
↓	September 2011: Publication of Core Strategy. Further public consultation
↓	December 2011 to January 2012: Examination by Planning Inspector
↓	Spring to early summer 2012: Adoption

- Some Initial Comments from Brympton Parish Council.**
- The total housing numbers required may seem excessive, especially in the current economic climate when sites already allocated don't seem to be progressing. However, the Strategy is in place until 2026 and it's difficult to predict what will happen in this period. Building of houses will, as always, be based on market forces.
  - Location of the houses and associated employment land, as far as the Yeovil allocation is concerned, needs to be carefully considered. The parish council's view is that over the last 20 years or so there has been too much development to the north-west of Yeovil and apart from the fact that the highways infrastructure is under considerable pressure, any more development in this area will start to 'assimilate' adjacent villages. The Core Strategy proposals recommend that the 'Urban Extension' development allocation should be in the south-west (between the A37 and the A30). Brympton PC fully endorses this option.
  - Density of housing - At Brympton PC we've been unhappy about housing densities for some time but Government guidelines have been about maximising the use of land. This has resulted, in our opinion, in over-development of some sites. These Government guidelines are now being removed and we would hope that locally guided housing densities will prevail.
  - Infrastructure - along with all this development we need to ensure that the infrastructure is improved at the same time and not constantly deferred.

**Plan for South Somerset 2026: Our Vision**

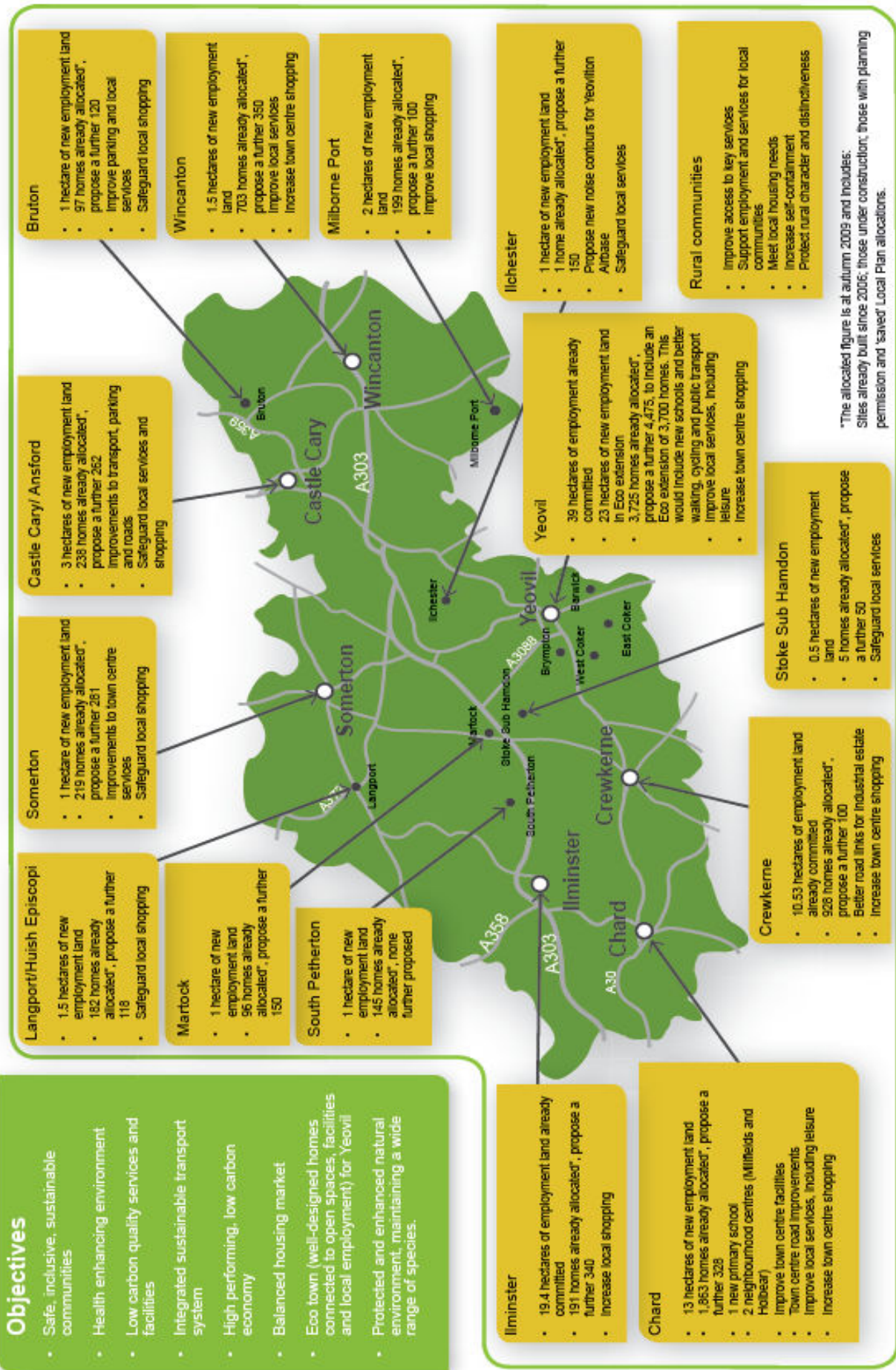
"South Somerset is a thriving, attractive and affordable place to live and work. Its settlements are more self-contained with the opportunity for using less energy in businesses and everyday living."

**Objectives**

- Safe, inclusive, sustainable communities
- Health enhancing environment
- Low carbon quality services and facilities
- Integrated sustainable transport system
- High performing, low carbon economy
- Balanced housing market
- Eco town (well-designed homes connected to open spaces, facilities and local employment) for Yeovil
- Protected and enhanced natural environment, maintaining a wide range of species.

**Have your say on these proposals**

These are the current 'preferred options' being put forward from 2008 to 2026. You are invited to view and comment on all of the options that have been identified, either online or at your local consultation event. (See back page for more details).



"The allocated figure is at autumn 2009 and includes: Sites already built since 2006; those under construction; those with planning permission and 'saved' Local Plan allocations."



**Compare the Market!!**

The festive season will kick off in Yeovil later this month when the town's packed Christmas Markets return.

Dozens of stallholders have booked pitches with goods ranging from homemade food and drink to one-off gifts, and South Somerset District Council's Markets Supervisor Joy Streetin is expecting a busy Christmas season.

She said, "This year we have a full range of high quality stalls. We've got a wood craftsman, Andalucian style clothing, handmade jewellery and much more. I genuinely love the Christmas market atmosphere that our market brings to the town and hope everyone pays a visit to experience it."

Cllr Tony Fife, Area South Chairman added, "Markets bring a real buzz to the town centre and every year the stallholders bring something different. I know the local produce stalls are especially popular in the run up to Christmas. I hope that anyone coming to Yeovil town centre for their Christmas shopping takes a trip to Middle Street to take in the atmosphere and see what the stalls have to offer."

More information on local markets can be found at [www.southsomerset.gov.uk](http://www.southsomerset.gov.uk) or from SSDC on 01935 462462.

**Yeovil Christmas Markets**

Sundays (10am-4 pm)	Christmas Week (9am - 3pm)
21st November	Friday 17th December
28th November	Saturday 18th December
5th December	Tuesday 21st December
12th December	Wednesday 22nd December
19th December	Thursday 23rd December
	Friday 24th December



**Museum of South Somerset**

**Museum Miscellany**

Come and see a man trap, fans, a marble statue, truncheons, a feather boa that belonged to an African Chieftain and a cat o' nine tails.

These items and more are all on display in our Museum Miscellany exhibition and were chosen by volunteers cataloguing and documenting the museum's collection at the Community Heritage Access Centre at Lufton.

Many of the items have not been on public display before or for many years. Most were found during the move to the Community Heritage Access Centre at Lufton after being packed in boxes for years and previously stored at various places around Yeovil, including a redundant nuclear bunker and an old public convenience.

We've also included items that we've put into a 'whoops' case. These are items that would not be accepted into the museum's collection today but were in the past. The way museums collect objects changes over the years and in the past museums accepted every item that was donated to them, today we only collect items concerning Yeovil's history.

**Volunteers at the Museum of South Somerset have been working on a project to develop historical walks around Yeovil.**

This project called Walking Down Memory Lane and is the result of a collaboration between a few members of the volunteer team at the Museum of South Somerset.

We who have combined their various skills to create a series of photograph albums, which set out to remind us of how Yeovil looked before the major redevelopment which took place in the town in the 1960's. The albums are available to view in the Museum of South Somerset. Walks can be downloaded from <http://www.southsomerset.gov.uk/leisure-and-culture/museums-and-heritage/museum-volunteering-/walking-down-memory-lane-project>

**Motoring with Pete.**



The winter of 2009/2010 was long and cold and again resulted in a lot of County Councils running short of salt with which to treat the roads of the County.

Salt in this country is mainly mined in Cheshire and was formed 220 million years ago at a time when England was covered by inland seas and dinosaurs roamed the Earth. Hot temperatures slowly evaporated the waters leaving vast salt deposits in the ground beneath Cheshire.

Rock salt deposits were first discovered in 1844 and to begin with, shafts 4feet square were sunk into the ground and manual labour was used to mine the salt and bring it to the surface. The original mines used the room and pillar method of mining, which is where they leave large pillars of salt intact to hold up the roof. On average rooms were 8m high and 20m wide. This method is still used today although the shaft is 4.88m in diameter and 164.5m deep. The machinery used today in the mines has to be dismantled on the surface, taken down the shaft and re-assembled, never to leave the mine again.

The biggest and oldest salt mine in England today is the Salt Union Mine at Winsford, Cheshire which mines about 1 million tonnes of rock salt each year but at it's present rate of mining will only last about another 70 years. The mine today covers an area of 15 square kilometres, could fit 700 football pitches inside and has 140 miles of tunnels controlled with a traffic lights system.

The rock salt after it has been brought to the surface is then transported by road to the various Council depots through out the country, where it is stored until needed.

Rock salt on its own tends to cake and stick together, so it is mixed with hydrous sodium ferrocyanide which, while harmless in its natural form, can undergo chemical changes in strong sunlight to produce the extremely toxic chemical hydrogen cyanide. Salt deposits must therefore be kept as far as possible from waterways to avert the possibility of cyanide-tainted run off entering fisheries or farms. Sometimes the salt is mixed with molasses in order to help it stick to the road surface, however the sweet molasses often attracts livestock, who lick the road causing a danger to passing traffic.

Rock salt works by turning ice or snow surrounding each granule into saline solution. The action of the traffic is essential for salting to be effective by breaking down the salt granules to form a saline solution to prevent ice from forming or to melt the ice. The grit can be swept up by road sweepers and re-used, but the salt is not renewable and sea salt unfortunately is too fine to be used to grit roads.

So who is responsible for what and for which roads ? The Government Highway Agency is responsible for all Motorways. The County Councils are responsible for all other roads and priority is given to "A" class roads and the main bus routes. Secondly all other classified roads and minor bus routes and important unclassified roads are treated and finally estate roads and pedestrian footways, although very hilly estate roads may be gritted earlier.

Happy motoring,  
Pete



**Waste and recycling**

Enter a postcode in the My Neighbourhood section of the SSDC website [www.southsomerset.gov.uk](http://www.southsomerset.gov.uk) to find out when you will receive the **Sort It Plus** service.

**Christmas collection dates:**

<i>Usual Collection Day</i>	<i>Revised Collection Day</i>
Thursday 23rd December 2010	No change
Friday 24th December 2010	No change
Monday 27th December 2010	Tuesday 28th December 2010
Tuesday 28th December 2010	Wednesday 29th December 2010
Wednesday 29th December 2010	Thursday 30th December 2010
Thursday 30th December 2010	Friday 31st December 2010
Friday 31st December 2010	Sunday 2nd January 2011
Monday 3rd January 2011	Tuesday 4th January 2011
Tuesday 4th January 2011	Wednesday 5th January 2011
Wednesday 5th January 2011	Thursday 6th January 2011
Thursday 6th January 2011	Friday 7th January 2011
Friday 7th January 2011	Saturday 8th January 2011

No change to subsequent dates, all normal collections resume.

Garden waste collections are suspended from Monday 27th December recommencing Monday 10th January 2011

**Natural Christmas trees under 6ft** can be collected. If you pay for garden waste collections you can put them out on normal garden waste collection days. Otherwise, put out the tree on your normal refuse collection day between 10th and 21st January 2011 for disposal. Place the tree next to your bin or sack. Remove all decorations.

During periods of severe weather, please check the SSDC website or local radio for service updates

Clinical waste will be collected on the revised collection days as above.

**Help tomorrow take shape**



2011 Census coming to a letterbox near you

On 27 March 2011 all residential households in the United Kingdom will be taking part in a census. Since 1801 a day has been chosen every ten years for this purpose. The census provides an excellent source of information about the population. This enables central and local government, health authorities and many other organisations to plan housing, education, health and transport services for years to come.

The census statistics feed into the allocation of funding for local authorities and play a major part in their ability to provide local services, so it is crucial the population estimate is as accurate as possible.

When the questionnaire envelope comes through the door you'll easily recognise it by the purple 2011 Census logo. Take care of it. If, like many people, you want to complete the questionnaire online, your individual internet code is on the front of the questionnaire.

The 2011 Census doesn't want anyone to fall behind - so there is a wide range of help options available (such as language guidance booklets, large print format, Text Relay and census field staff on hand, as well as online help and telephone call centres).

More information about the 2011 Census can be found at: [www.census.gov.uk](http://www.census.gov.uk)

Information about jobs for the 2011 Census can be found at: [www.censusjobs.co.uk](http://www.censusjobs.co.uk)

**New Child Adoption Website**

Somerset County Council has launched a new website [www.adoptioninsomerset.org.uk](http://www.adoptioninsomerset.org.uk) which gives information about all aspects of adoption.



SCC assess, approve and provide support for those people who wish to take on total parental responsibility for a child or children through the legal process of adoption and beyond. There are many reasons why a child cannot live with his or her birth parents, and adoption into a new family provides a secure and loving upbringing.

Adoption is a legal process where all parental rights and responsibilities for a particular child are transferred to the adopters. As an adopter you have the same rights as other parents. The child ceases to have any legal ties with his/her birth parents; there may however be some form of contact arrangements in the form of letters and photos, or for a few children face to face meetings with their birth family.

If you are interested in becoming an adopter please contact SCC on freephone 0800 587 9900 or complete their [online form for prospective adopters](#)

**Dates for your diary**

Sunday, June 26th 2011 - a performance of "Twelfth Night" will take place in the gardens of Brympton House, by kind permission of Judge Glossop.

The Annual Parish meeting will be held on Wednesday, 27th April 2011 at 7.30 p.m. at the Parish Room, Abbey Community Centre.



**Local Stroke Victim DARREN SHUTLER**

Darren is putting his running shoes on to complete his first ever marathon in Brighton next April. He is running under the flag of The Stroke Association.

You can support him by visiting [www.justgiving.com/Darren-Shutler](http://www.justgiving.com/Darren-Shutler) or if you would like to support him in any other way please contact (01935) 848768



# Brympton Parish Council

We are looking for new Parish Councillors –could it be you?

LOCAL ISSUES NEED LOCAL PEOPLE TO SPEAK UP FOR THEM



YOU could help keep Brympton a vibrant, good place to live by becoming a Parish Councillor.

YOU could be in at the 'grass roots' level of Local Government and be involved in making things happen or getting things sorted!

YOU could get local views about local issues brought to the attention of the powers that be.

You only need to be able to give up one evening a month to attend Parish Council meetings, and in return you will receive the satisfaction of knowing that you are helping your local community.

Candidates must be at least 18 years of age and a British subject or a citizen of the Commonwealth or European Union and must satisfy at least one of the following:

- be a local government elector for the Parish of Brympton;
- have, during the whole of the previous 12 months, occupied land or other property in the parish, either as owner or tenant
- have, during the whole of the previous 12 months, had your principal or only place of work in the parish;
- have resided in the parish during the whole of the previous 12 months

The Parish Council normally meets on the fourth Wednesday of the month at 7.30pm. New Councillors will hold office until the next local elections in 2011.

Any person interested in becoming a Parish Councillor should contact the Clerk, Liz James, by phone 01935 424332 or e-mail [clerk@brymptonparishcouncil.gov.uk](mailto:clerk@brymptonparishcouncil.gov.uk) for more information.

See [www.brymptonparishcouncil.gov.uk](http://www.brymptonparishcouncil.gov.uk) for information about current Parish issues

## Are You Interested In Taking On An Allotment?

The Parish Council is looking into the provision of allotments for local residents. Local landowner Colin Baker has kindly agreed to provide an area of land at the Lufton Lane /Thorne Lane junction and Brympton Parish Council is planning to set this up for use as allotments.



A meeting is to be held at **7.30 p.m. on Tuesday, 14th December** at the Parish Room, Abbey

Community Centre (entrance from the outside ramp only) for anyone interested. At this meeting it is intended to form an Allotment Association.

If you would like further information please contact the Clerk, Liz James, on 01935 424332

**Queries** - if you have any queries about the Parish Council, want information on local tourist attractions, advice leaflets on planning, etc., call in at the Abbey Community Centre between 12 and 2 p.m. on a Wednesday.

If we can't answer your question we should be able to find someone who can.

Also, at some of these sessions you will have the opportunity to discuss any problems with our PCSO Jason Helyar

A personal message to welcome a new resident, Sophie Knight, to Thorne Gardens. Hello Mum!

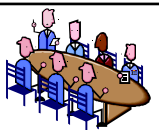
## Your Parish Council

<p><b>Elizabeth Glaisher (Chairman)</b>                  Roger Meecham                  Peter Dutton                  Alan Graham                  Graham Pritchard                  Peter Seib                  Darren Shutler                  Vacancy                  Vacancy                  Vacancy                  Vacancy  <b>Parish Clerk: Elizabeth James</b></p>	<p><b>11 Athelney Way, Yeovil, BA21 3TN</b>                  13 Tintagel Road, Yeovil, BA21 3RE                  46 Thorne Gardens, Yeovil, BA21 3RG                  c/o South West Coaches, Oak Way, Yeovil                  10 West Combe, Yeovil, BA21 3UE                  11 Forde Park, Yeovil, BA21 3QP                  5 Streamside Cottages, Dodham Crescent, Yeovil,</p> <p>The Parish Office, Abbey Community Centre                  The Forum, YEOVIL. BA21 3TL</p>
---	--

Parishioners can contact the Parish Council by:  
 Telephone: 01935 424332  
 e-mail: [clerk@brymptonparishcouncil.gov.uk](mailto:clerk@brymptonparishcouncil.gov.uk)  
 post to: Brympton Parish Council, The Parish Room, The Forum, Yeovil BA21 3TL

## Parish Council Meetings

Members of the public are always welcome at Brympton Parish Council Meetings and there is an open forum at the start to raise any concerns.



Agendas are published on the Parish Notice Boards 5 clear days before the meetings and also on our web site [www.brymptonparishcouncil.gov.uk](http://www.brymptonparishcouncil.gov.uk)

Next meetings:

- |                           |                                     |
|---------------------------|-------------------------------------|
| 15 <sup>th</sup> December | Jubilee Hall, Thorne Coffin         |
| 26 <sup>th</sup> January  | Parish Room, Abbey Community Centre |
| 23 <sup>rd</sup> February | Parish Room, Abbey Community Centre |
| 23 <sup>rd</sup> March    | Parish Room, Abbey Community Centre |
| 27 <sup>th</sup> April    | Parish Room, Abbey Community Centre |

All meetings start at 7.30 p.m.

The meetings held at the Community Centre are held at the Parish Room and entrance is from the external ramp only - there is no entrance from the main hall

Brympton Newslink is published by Brympton Parish Council and is normally delivered to about 3,000 houses in the parish.

Our thanks to St James Scouts who are helping to deliver this edition of Newslink.

The views in this publication do not necessarily represent the views of Brympton Parish Council or the Editor (Roger Meecham)